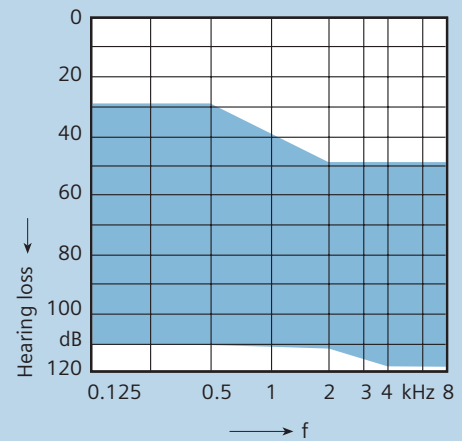


### Premium Features

- Fully digital programmable 4-channel BTE instrument
- Optimized solution for severe to profound hearing loss
- High performance directional microphone (TwinMic™)
- Feedback cancellation
- Adaptive noise reduction in 4 channels
- 4 adjustable compression channels with configurable crossover frequency
- 4 individual hearing programs for microphone, telecoil, and audio input
- Professional and efficient fitting with the workflow oriented CONNEXX™ software



### Additional Features

- Nanocoated housing
- Telecoil
- Audio input and FM compatibility
- Volume control
- Battery compartment with ON/OFF function
- Push button for program selection with alert tones for program change
- Battery type 675
- Alert tones for low battery voltage

### Options & Accessories

- Available in the following colors: beige, brown, gray, granite, silver, black, pearl white, light pink, light blue transparent and translucent fun colors: purple, green, blue, orange, and pink
- Small earhook
- Audio shoe
- Materials and accessories to support pediatric fittings

# INTUIS SP Dir BTE Technical Data

---

		2cc coupler Standard ANSI S3.22-2003
<b>Output Sound Pressure Level</b>		
	Peak	138 dB
	HF-Average OSPL 90	131 dB
<b>Gain (Input 50 dB)</b>		
	Peak	80 dB
	HF-Average	72 dB
	Reference test gain	55 dB
<b>Frequency Range</b>		
	Low frequency limit	100 Hz
	High frequency limit	5700 Hz
<b>Total Harmonic Distortion</b>		
	500 Hz	3%
	800 Hz	2%
	1600 Hz	1%
<b>Equivalent Input Noise</b>		15 dB
<b>Induction Coil Sensitivity</b>		
	HFA SPLITS <sup>1</sup> (Left/Right)	116/109 dB
	STS <sup>2</sup> (Left/Right)	1/-6 dB
<b>AGC-O (CK = -21 dB)</b>		
	Attack time	3 ms
	Release time	100 ms
<b>Battery</b>		
	Type	675 cell zinc-air
	Voltage	1.3 v
	Current Drain	1.6 mA
	Typical Life	~300 h

1 SPLITS = Coupler SPL for an Inductive Telephone Simulator

2 STS = Simulated Telephone Sensitivity

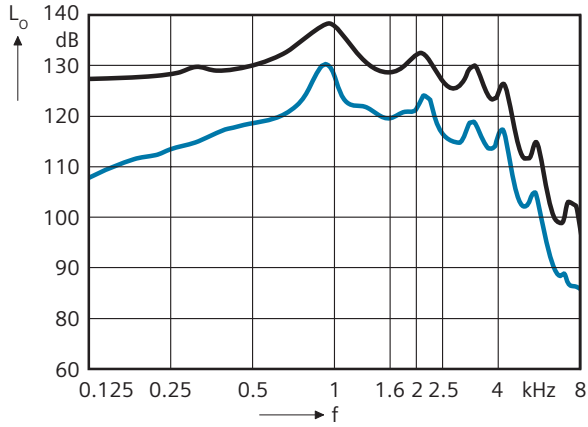
# INTUIS SP Dir BTE

## Basic Data

Output Sound Pressure Level ( $L_i = 90$  dB)

Maximum Gain ( $L_i = 50$  dB)

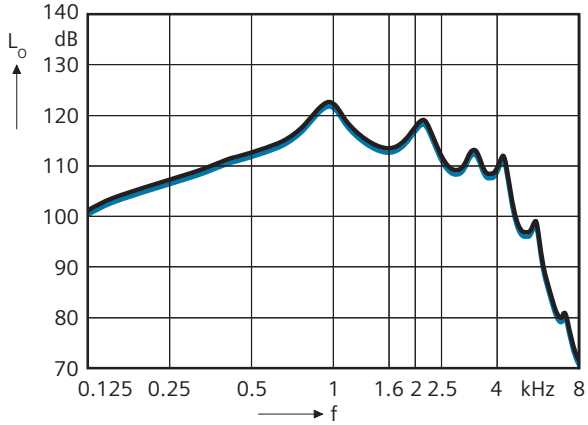
IEC 118-7/A; ANSI S3.22-2003



Frequency Response ( $L_i = 60$  dB)

Basic Acoustic Response ( $L_i = 60$  dB)

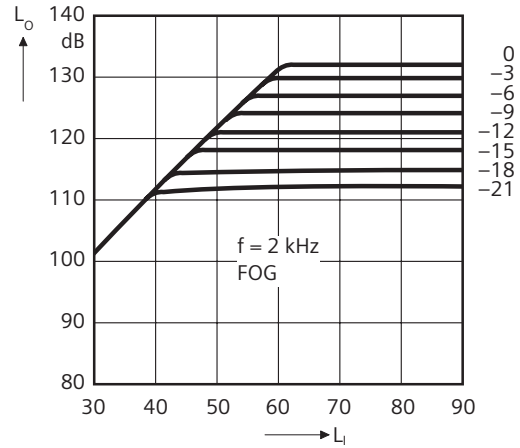
IEC 118-7/A1; ANSI S3.22-2003



## Compression

Effect of MPO Control

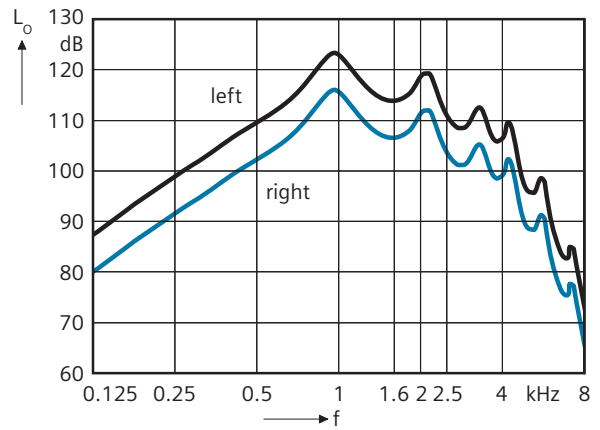
ANSI S3.22-2003



Inductive Response left

Inductive Response right

ANSI S3.22-2003

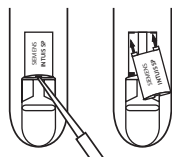


# INTUIS SP Dir BTE Fitting Information



## Programming Socket

The programming socket lies under a flap below the program button. Use a suitable tool to open the flap. After the programming procedure is complete, close the flap using your fingernail.



## Changing the Typeplates

To mark the left and right side of the INTUIS SP Dir instruments when fitting binaurally, exchange the housing colored typeplates on the inner curve of the instruments for blue (left) and red (right). Use a suitable tool to lift and remove the typeplate. Lock the two pins on the new typeplate into the openings and press gently into position with your finger.



## Audio Shoe

To attach an audio shoe to INTUIS SP Dir, open the battery compartment to the first stop. Open the flap under the programming socket and hook the audio shoe in from the front. Press the audio shoe into place so that it attaches to the back and the curve of the audio shoe presses against the bottom of the hearing system.

To remove the audio shoe, pull it toward the front. Then unhook the audio shoe and close the flap.



## Earhook, small

For optimal fitting to smaller ears, a small earhook is an available option.



## Pediatric Accessories

A Use and Care kit containing items to care for hearing instruments (blower, stethoscope, drying kit, and more) and a teddy bear wearing hearing instruments packed into a colorful lunchbox; storybooks for children about hearing loss, and other materials are available to support pediatric fittings. For more information or to order pediatric materials, contact your Siemens Sales Representative.

## **Siemens Hearing Instruments, Inc. locations**

### **United States Headquarters/Northeast Manufacturing Facility:**

10 Constitution Avenue, P.O. Box 1397, Piscataway, NJ 08855-1397 • (732) 562-6600 or (800) 766-4500

**Midwest Manufacturing Facility:** (847) 808-1200 or (800) 333-9083

**West Manufacturing Facility:** (562) 404-4531 or (800) 998-9787

**Technical Support for Software and Systems:** (888) 231-1333

[www.usa.siemens.com/hearing](http://www.usa.siemens.com/hearing)

### **Siemens Hearing Instruments A Division of Siemens Canada Limited**

320 Pinebush Road, Cambridge, Ontario, Canada N1T 1Z6 • (519) 622-5200 or (800) 663-0620

[www.siemens.ca/hearing](http://www.siemens.ca/hearing)

Information in this brochure subject to change without notice. © 2007 Siemens Hearing Instruments, Inc. All rights reserved.