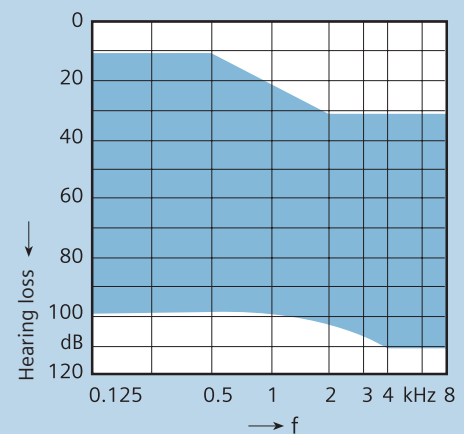


Technical Data

CIELO™ 2 P BTE

Premium Features

- Programmable BTE instrument with optional ePocket™
- Fully digital 6-channel amplifier
- For moderate to severe hearing losses
- Data logging functionality for more precise fine-tuning
- High performance, automatic and adaptive directional microphone
- Automatic and adaptive feedback cancellation
- Automatic situation detection including music detection
- Adaptive noise reduction and speech enhancement in 6 channels
- Wind noise reduction
- 4 individual hearing programs for microphone, audio shoe and/or telecoil



Additional Features

- Nanocoated housing
- AutoPhone™ switchless telecoil
- Audio Input
- Volume control
- Battery compartment with lock and ON/OFF switch
- Push button for program selection with alert tones for program change
- Battery type 13
- Alert tones for low battery

Optional features

- Available in the following colors: beige, brown, grey, granite, silver, black, pearl white, transparent, and translucent fun colors: purple, green, blue, orange and pink
- Small earhook
- Audio shoe
- Materials and accessories to support pediatric fittings

Technical Data

www.usa.siemens.com/hearing

SIEMENS

CIELO 2 P BTE Technical Data

		2cc coupler
Output Sound Pressure Level	Peak	131 dB
	HF-Average - OSPL 90	126 dB
Gain (Input 50 dB)	Peak	70 dB
	HF-Average	61 dB
	Reference test gain	49 dB
Frequency Range	Low frequency limit	100 Hz
	High frequency limit	7100 Hz
Total Harmonic Distortion	500 Hz	2%
	800 Hz	1%
	1600 Hz	1%
Equivalent Input Noise		16 dB
Inductive Coil Sensitivity	HF-Average SPLITS* (left/right)	106 dB/109 dB
	RSETS** (left/right)	-3 dB/0 dB
AGC-O (CK = -21 dB)	Attack time	5 ms
	Release time	100 ms
Battery	Type	13 cell zinc-air
	Current Drain	1.0 mA
	Typical Life	220 hrs.

Technical information for wireless function:
 Operating frequencies: $f_{\text{low}} = 115 \text{ kHz}$, $f_{\text{high}} = 120 \text{ kHz}$;
 Rated H-field strength (maximum): $-11,5 \mu\text{A/m}$ at 3 meters.

*SPLITS=Coupler SPL for an Inductive Telephone Simulator;
 **RSETS=Relative Simulated Equivalent Telephone Sensitivity;

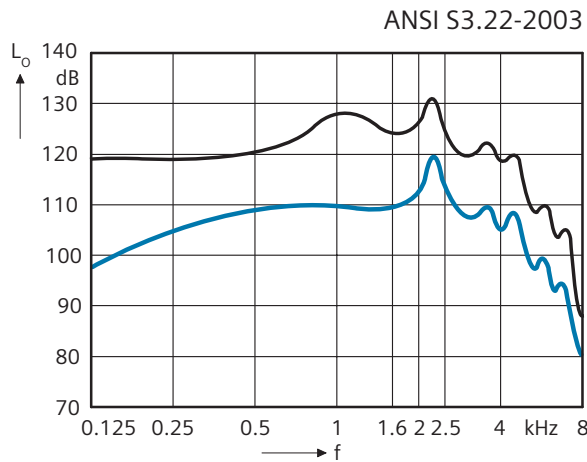
Measure instructions: Instrument in linear setting.

CIELO 2 P BTE Basic Data

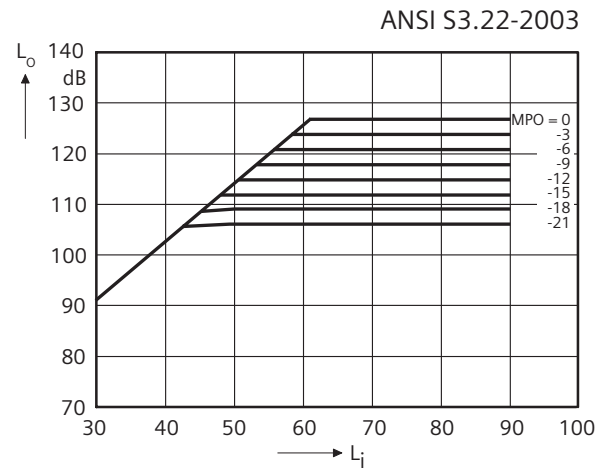
2 cc coupler

Output Sound Pressure Level ($L_i = 90$ dB)

Full on Gain ($L_i = 50$ dB)

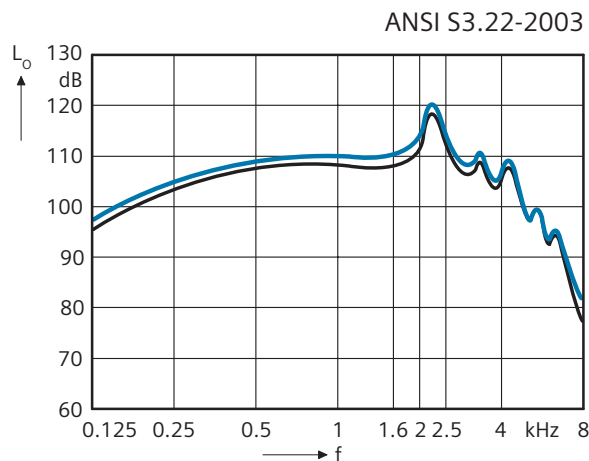


Effect of MPO-Control (FOG, $f = 2$ kHz)



Frequency Response ($L_i = 60$ dB)

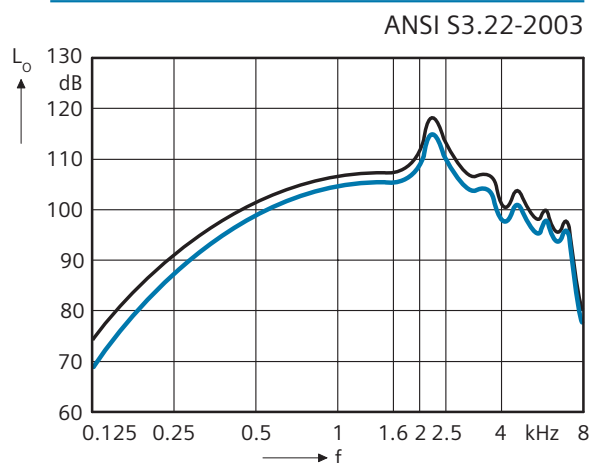
Basic Frequency response ($L_i = 60$ dB)



Inductive Response

Inductive Response Right ($H = 31.6$ mA/m)

Inductive Response Left ($H = 31.6$ mA/m)

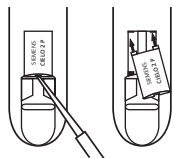


CIELO 2 P BTE Fitting Information



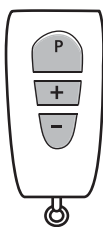
Programming Socket

The programming socket lies under a flap below the volume control. Use a suitable tool to open the flap. After the programming procedure is complete, close the flap using your fingernail.



Changing the Typeplates

To mark the left and right side of the CIELO 2 P instruments when fitting binaurally, exchange the housing colored typeplates on the inner curve of the instruments for blue (left) and red (right). Use a suitable tool to lift and remove the typeplate. Lock the two pins on the new typeplate into the openings and press gently into position with your finger.



ePocket™

The CIELO 2 hearing system supports the use of ePocket™, a bi-directional remote control with read out function.

ePocket can change the hearing programs and the volume of CIELO 2 P. The ePocket read out function will display the current program, volume level and battery status of the instrument(s).

ePocket includes a cover and clip.



Audio Shoe

To attach an audio shoe to CIELO 2 P, open the battery compartment to the first stop. Open the flap under the programming socket and hook the audio shoe in from the front. Press the audio shoe into place so that it attaches to the back and the curve of the audio shoe presses against the bottom of the hearing system.

To remove the audio shoe, pull it toward the front. Then unhook the audio shoe and close the flap.



Earhook, small

For optimal fitting to smaller ears, a small earhook is an available option.



Pediatric Accessories

A Use and Care kit containing items to care for hearing instruments (blower, stethoset, drying kit, and more) and a teddy bear wearing hearing instruments packed into a colorful lunchbox; storybooks for children about hearing loss, and other materials are available to support pediatric fittings. For more information or to order pediatric materials, contact your Siemens Sales Representative.

Siemens Hearing Instruments, Inc. locations

United States Headquarters/Northeast Manufacturing Facility:

10 Constitution Avenue, P.O. Box 1397, Piscataway, NJ 08855-1397 • (732) 562-6600 or (800) 766-4500

Midwest Sales Facility: (847) 808-1200 or (800) 333-9083

West Manufacturing Facility: (562) 404-4531 or (800) 998-9787

Technical Support for Software and Systems: (888) 231-1333

www.usa.siemens.com/hearing

Siemens Hearing Instruments

A Division of Siemens Canada Limited

320 Pinebush Road, Cambridge, Ontario, Canada N1T 1Z6 • (519) 622-5200 or (800) 663-0620

www.siemens.ca/hearing